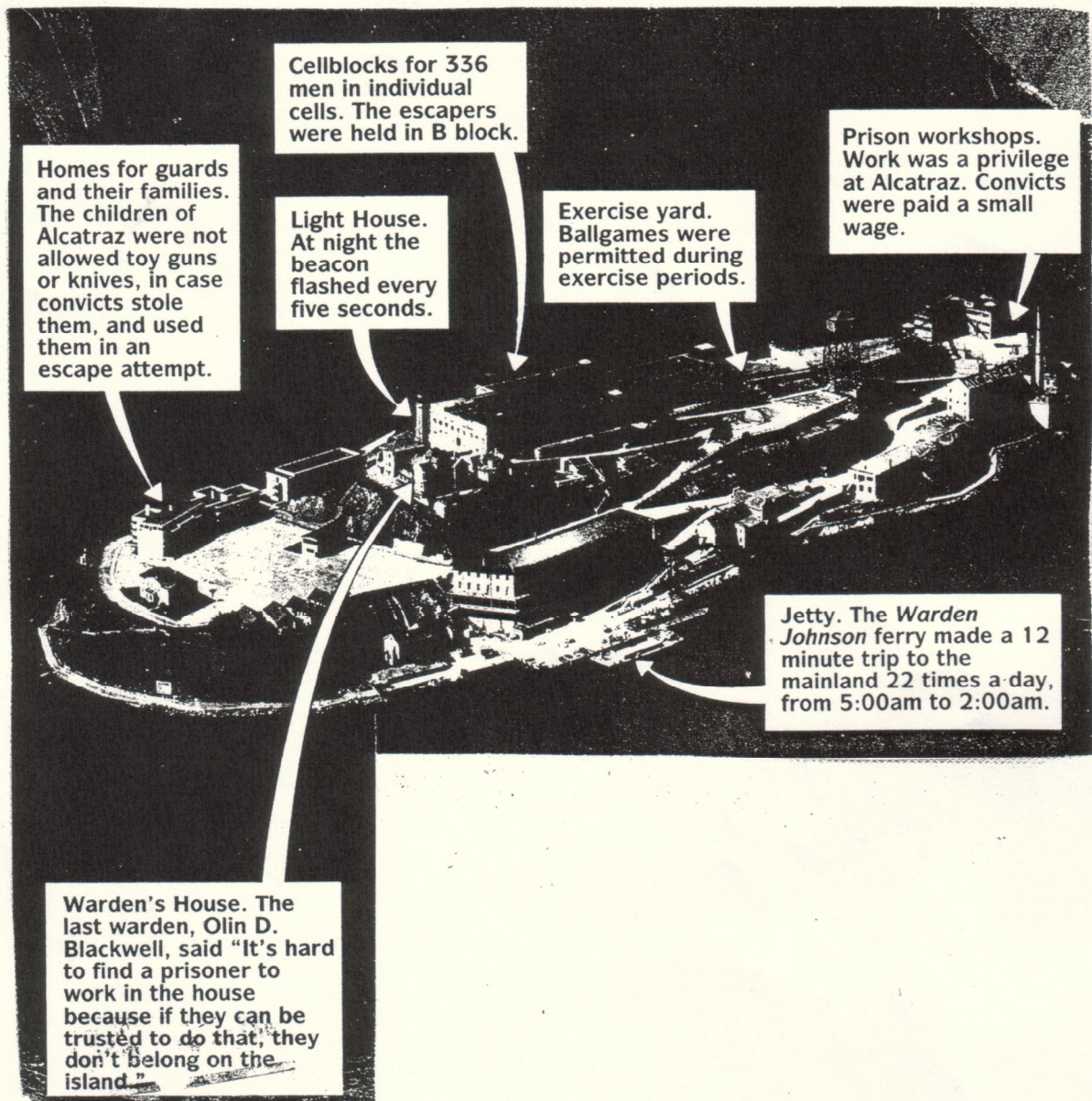




**ALCATRAZ ISLAND**





Homes for guards and their families. The children of Alcatraz were not allowed toy guns or knives, in case convicts stole them, and used them in an escape attempt.

Cellblocks for 336 men in individual cells. The escapers were held in B block.

Light House. At night the beacon flashed every five seconds.

Exercise yard. Ballgames were permitted during exercise periods.

Prison workshops. Work was a privilege at Alcatraz. Convicts were paid a small wage.

Jetty. The *Warden Johnson* ferry made a 12 minute trip to the mainland 22 times a day, from 5:00am to 2:00am.

Warden's House. The last warden, Olin D. Blackwell, said "It's hard to find a prisoner to work in the house because if they can be trusted to do that, they don't belong on the island."

# WANTED FBI

## ESCAPED FEDERAL PRISONER FRANK LEE MORRIS

Photographs taken 1960

FBI No. 2,157,606



**Aliases:** Carl Cecil Clark, Frank Laine, Frank Lane, Frank William Lyons, Frankie Lyons, Stanley O'Neal Singletary, and others

### DESCRIPTION

**Age:** 35, born September 1, 1926, Washington, D. C.  
**Height:** 5' 7½"  
**Weight:** 135 pounds  
**Build:** Medium  
**Hair:** Brown  
**Eyes:** Hazel  
**Complexion:** Ruddy  
**Race:** White  
**Nationality:** American  
**Occupations:** Car salesman, draftsman, painter  
**Scars and Marks:** Numerous tattoos including devil's head upper right arm, star base of left thumb, "13" base of left index finger

**Fingerprint Classification:** 22 M 9 U IOO 12  
L 1 U 000

### CRIMINAL RECORD

Morris has been convicted of burglary, larceny of an automobile, grand larceny, possession of narcotics, bank burglary, armed robbery and escape.

### CAUTION

MORRIS HAS BEEN REPORTED TO BE ARMED IN THE PAST AND HAS A PREVIOUS RECORD OF ATTEMPTED ESCAPE. CONSIDER EXTREMELY DANGEROUS.

A Federal warrant was issued on June 13, 1962, at San Francisco, California, charging Morris with escaping from the Federal Penitentiary at Alcatraz in violation of Title 18, U. S. Code, Section 751.

**IF YOU HAVE INFORMATION CONCERNING THIS PERSON, PLEASE NOTIFY ME OR CONTACT YOUR LOCAL FBI OFFICE. TELEPHONE NUMBER IS LISTED BELOW.**

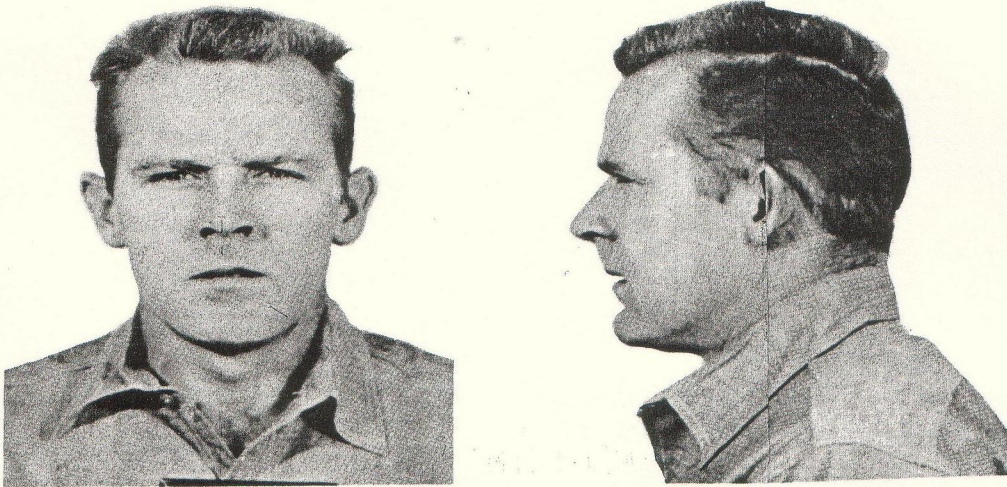


*J. Edgar Hoover*  
DIRECTOR  
FEDERAL BUREAU OF INVESTIGATION  
UNITED STATES DEPARTMENT OF JUSTICE  
WASHINGTON 25, D. C.

# WANTED FBI

## SCAPED FEDERAL PRISONER - BANK ROBBER JOHN WILLIAM ANGLIN

FBI No. 4,745,119



Photographs taken 1960

### DESCRIPTION

Age: 32, born May 2, 1930, Donalsonville, Georgia (not supported by birth records)  
Height: 5' 10"  
Weight: 140 pounds  
Build: Medium  
Eyes: Blue  
Hair: Blond  
Complexion: Ruddy  
Race: White  
Nationality: American  
Occupations: Farmer, laborer  
Scars and Marks: Scar left side of forehead, scar on left forearm near wrist, scar left side of abdomen, small scar left cheek

Fingerprint Classification:  $\frac{20 \text{ L } 29 \text{ W } 100 \text{ 18}}{\text{I } 12 \text{ W } 001}$

### CRIMINAL RECORD

Anglin has been convicted of grand larceny and bank robbery.

### CAUTION

ANGLIN HAS BEEN CONVICTED OF BANK ROBBERY AND WAS IN POSSESSION OF FIREARMS WHEN LAST ARRESTED. HE HAS A PREVIOUS HISTORY OF ATTEMPTED ESCAPE. CONSIDER EXTREMELY DANGEROUS.

A Federal warrant was issued on June 13, 1962, at San Francisco, California, charging Anglin with escaping from the Federal Penitentiary at Alcatraz in violation of Title 18, U. S. Code, Section 751.

IF YOU HAVE INFORMATION CONCERNING THIS PERSON, PLEASE NOTIFY ME OR CONTACT YOUR LOCAL FBI OFFICE. TELEPHONE NUMBER IS LISTED BELOW.



*J. Edgar Hoover*  
DIRECTOR  
FEDERAL BUREAU OF INVESTIGATION  
UNITED STATES DEPARTMENT OF JUSTICE  
WASHINGTON 25, D. C.  
TELEPHONE, NATIONAL 8-7117

# WANTED FBI

## ESCAPED FEDERAL PRISONER - BANK ROBBER CLARENCE ANGLIN

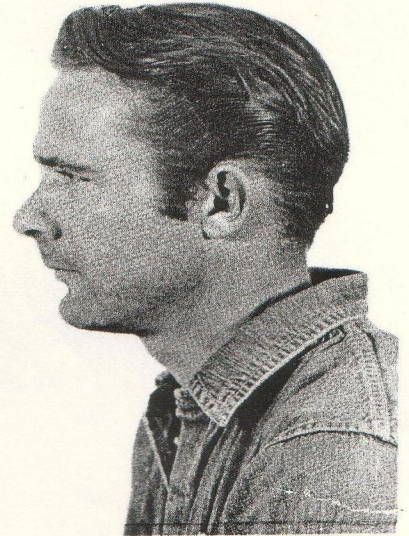
FBI No. 4,731,702



Photograph taken 1960



Photographs taken 1958



### DESCRIPTION

Age: 31, born May 11, 1931, Donalsonville, Georgia (not supported by birth records)  
Height: 5' 11"  
Weight: 160 to 168 pounds  
Build: Medium  
Hair: Brown  
Eyes: Hazel  
Complexion: Light  
Race: White  
Nationality: American  
Occupations: Cabinet maker, farmer, laborer  
Scars and Marks: Scar left side of upper lip, scar between eyes, scar right forearm, cut scar right ring finger; tattoos, "ZONA" and scroll left arm, "NITA" upper right arm

Fingerprint Classification:  $\frac{18 \ O \ 27 \ W \ IOO \ 21}{L \ 27 \ W \ OIO}$

### CRIMINAL RECORD

Anglin has been convicted of burglary, bank robbery and attempted escape.

### CAUTION

ANGLIN HAS BEEN CONVICTED OF BANK ROBBERY AND WAS IN POSSESSION OF FIREARMS WHEN LAST ARRESTED. HE HAS A PREVIOUS RECORD OF ESCAPES. CONSIDER EXTREMELY DANGEROUS.

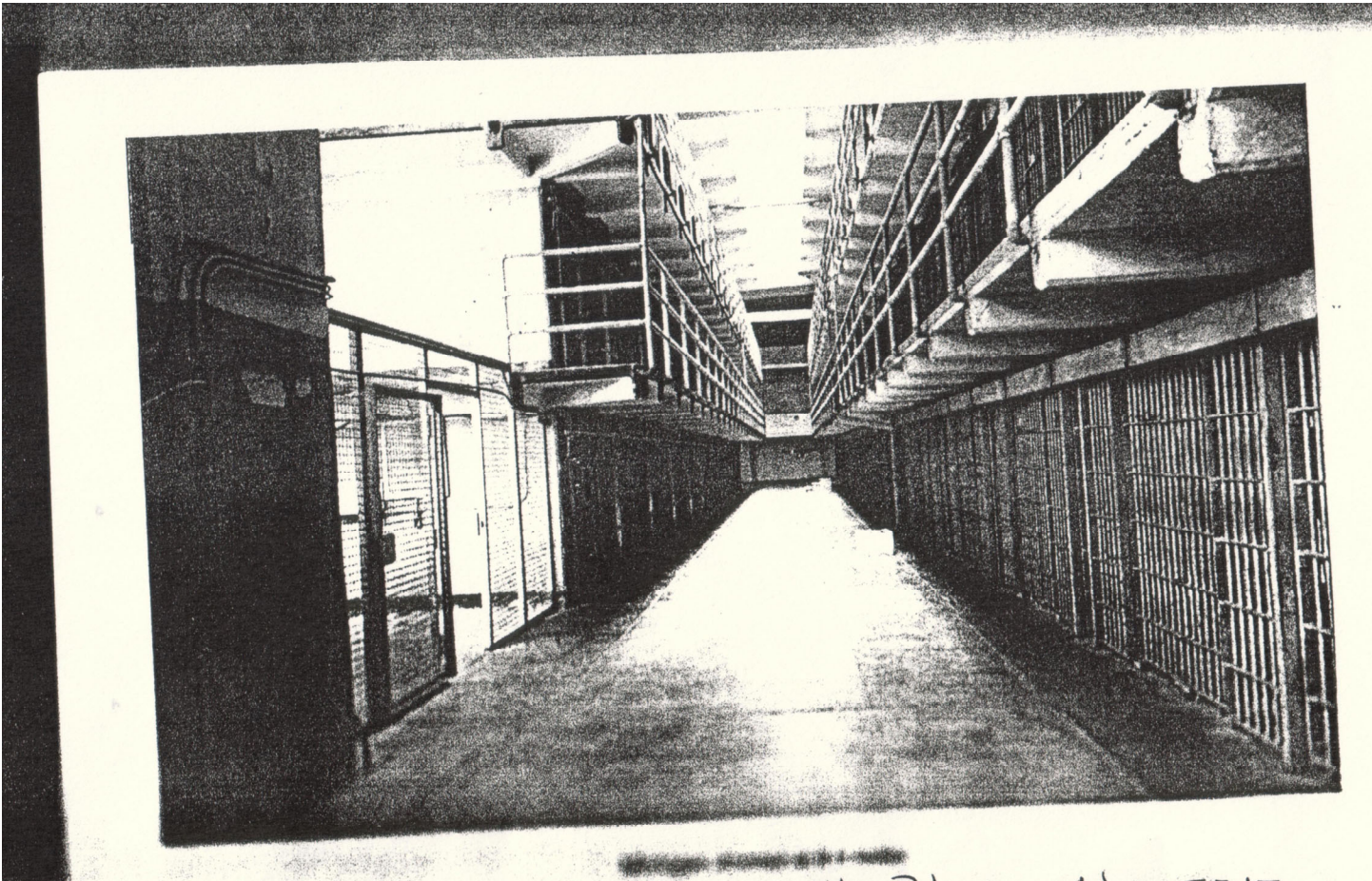
A Federal warrant was issued on June 13, 1962, at San Francisco, California, charging Anglin with escaping from the Federal Penitentiary at Alcatraz in violation of Title 18, U. S. Code, Section 751.

IF YOU HAVE INFORMATION CONCERNING THIS PERSON, PLEASE NOTIFY ME OR CONTACT YOUR LOCAL FBI OFFICE. TELEPHONE NUMBER IS LISTED BELOW.

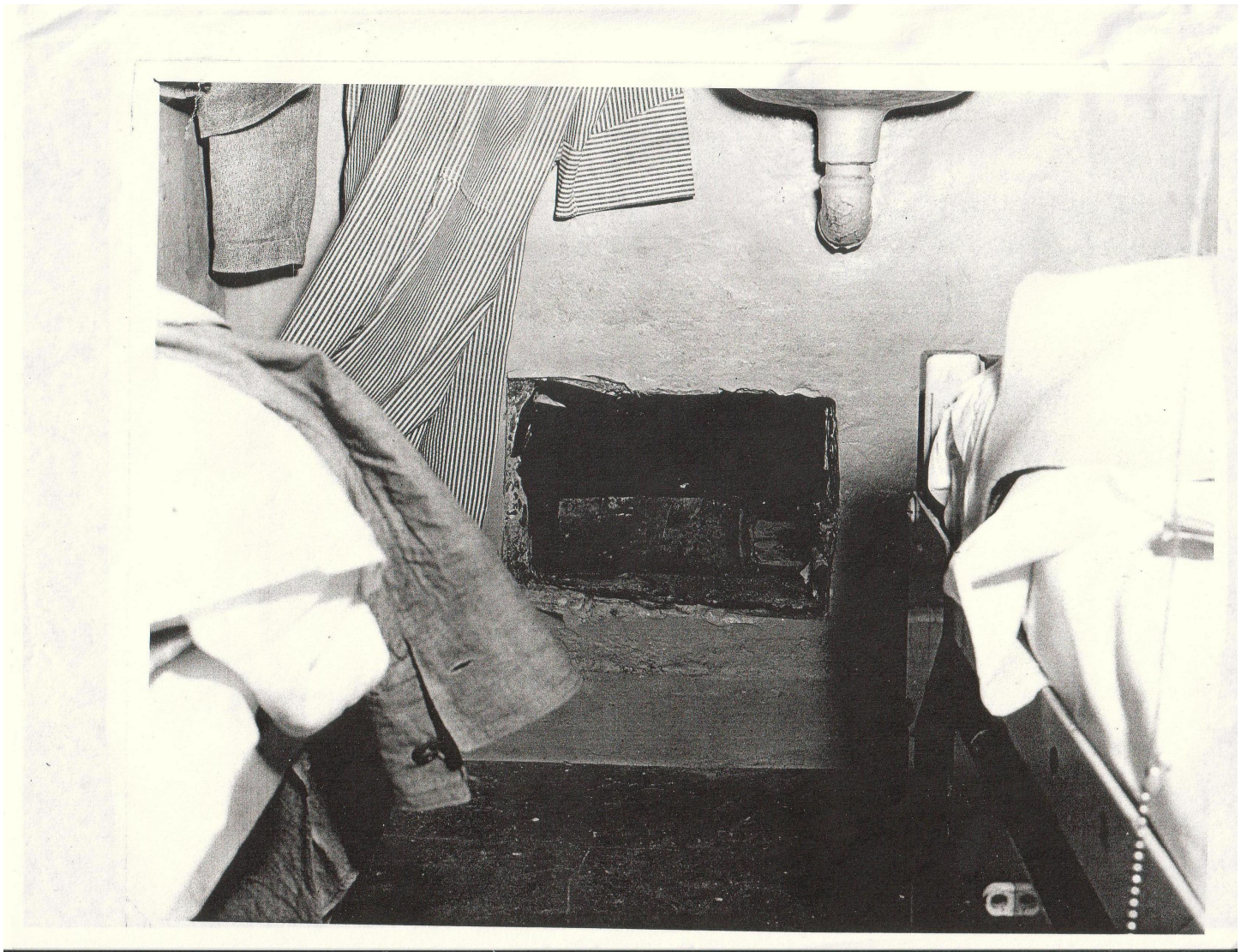


*J. Edgar Hoover*  
DIRECTOR  
FEDERAL BUREAU OF INVESTIGATION  
UNITED STATES DEPARTMENT OF JUSTICE  
WASHINGTON 25, D. C.  
TELEPHONE, NATIONAL 8-7117

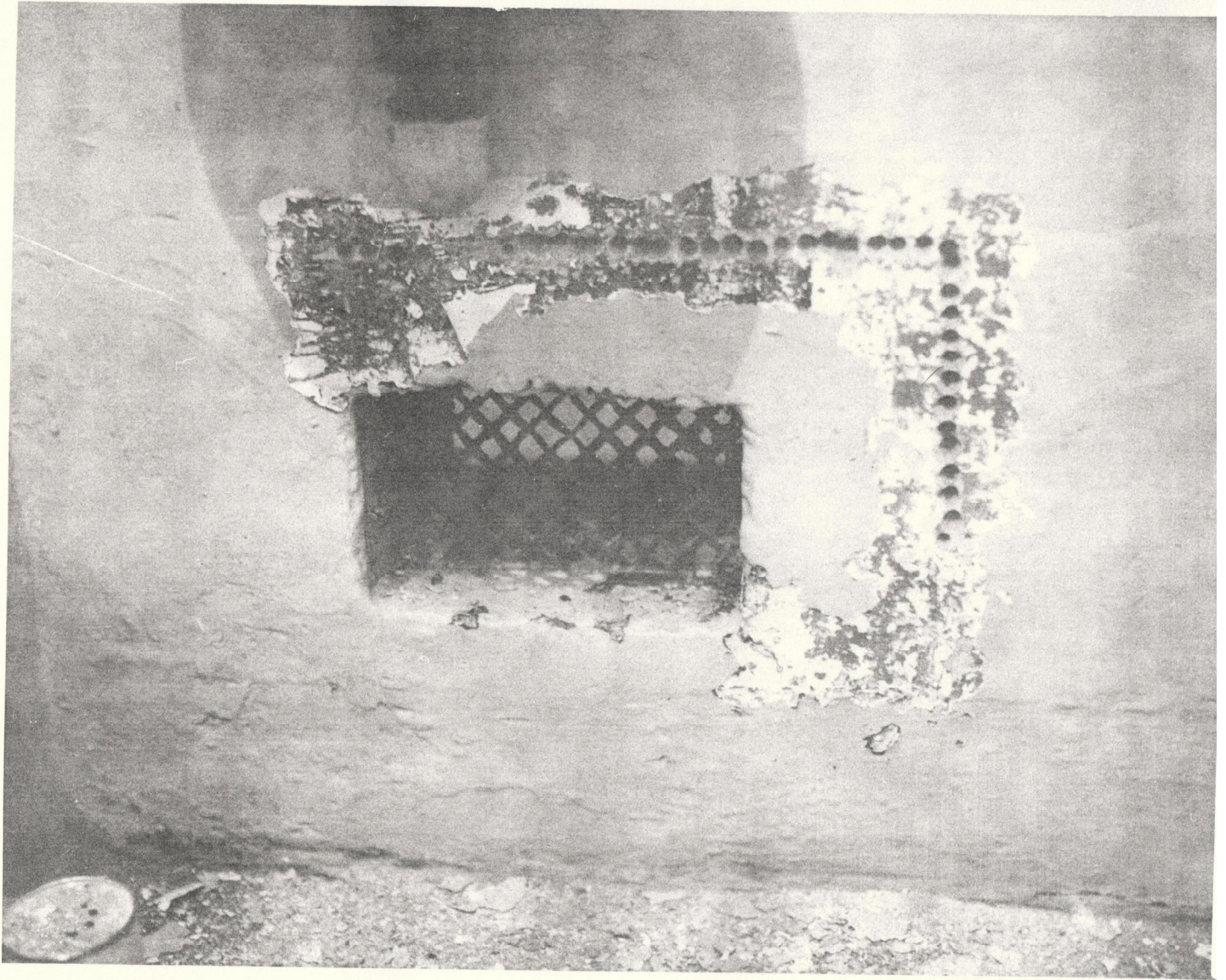
Wanted Flyer No. 305  
June 14, 1962

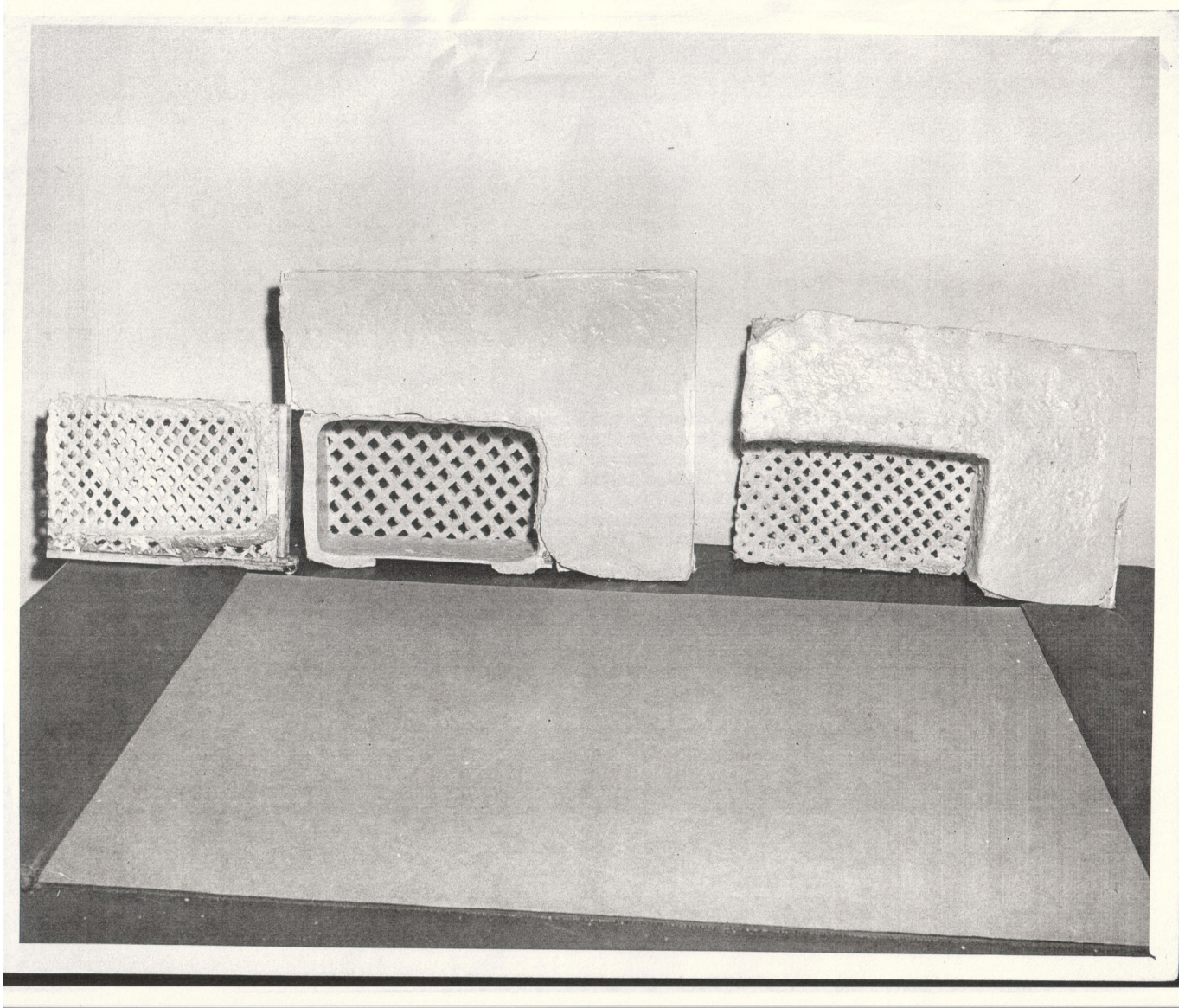


Escapes cells in B Block



Photograph of the aperture made by the removal of the vent leading from the rear of Cell 152B into the utility service area. This opening could be virtually concealed by dropping the prison-issued bathrobe across the hole.

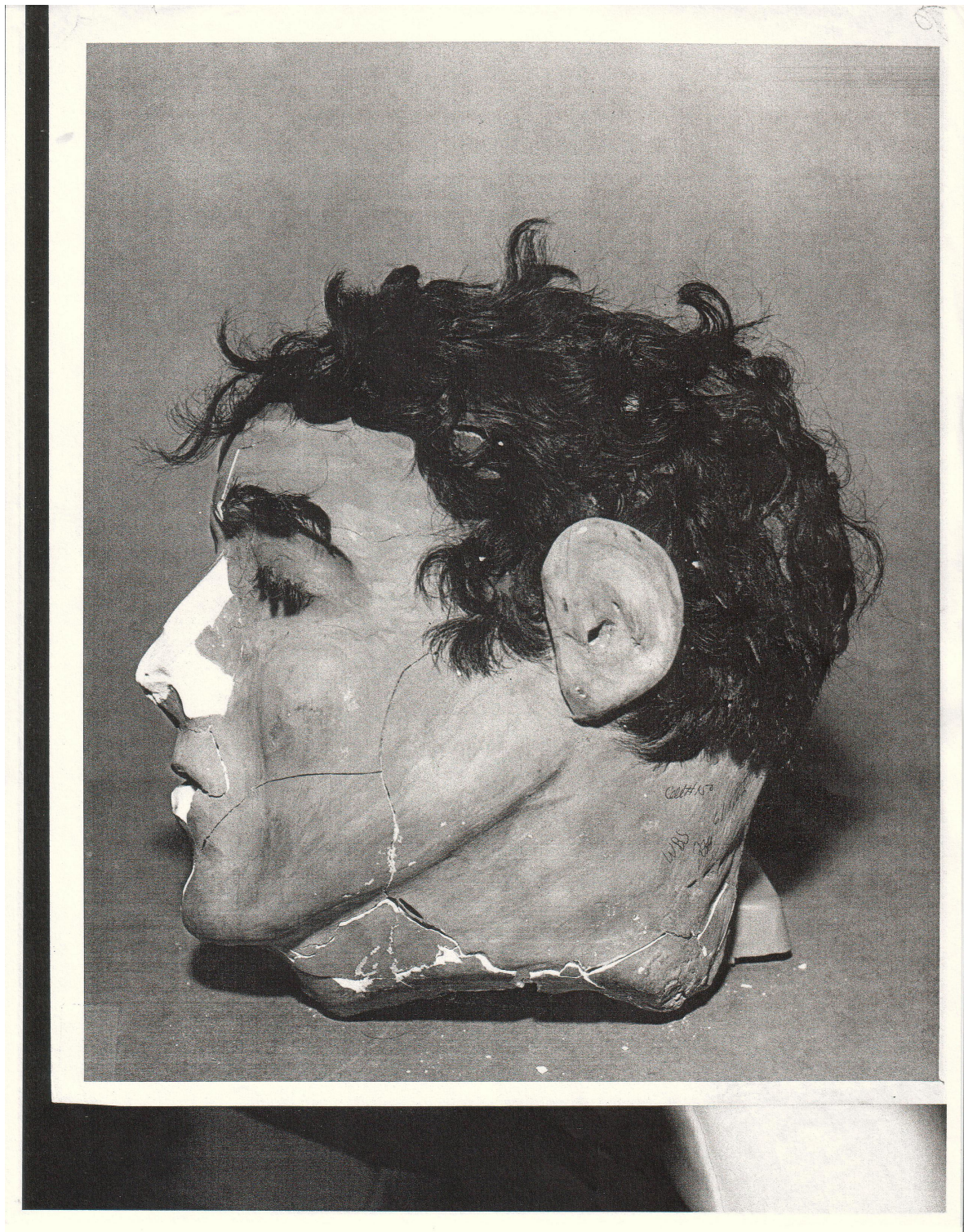




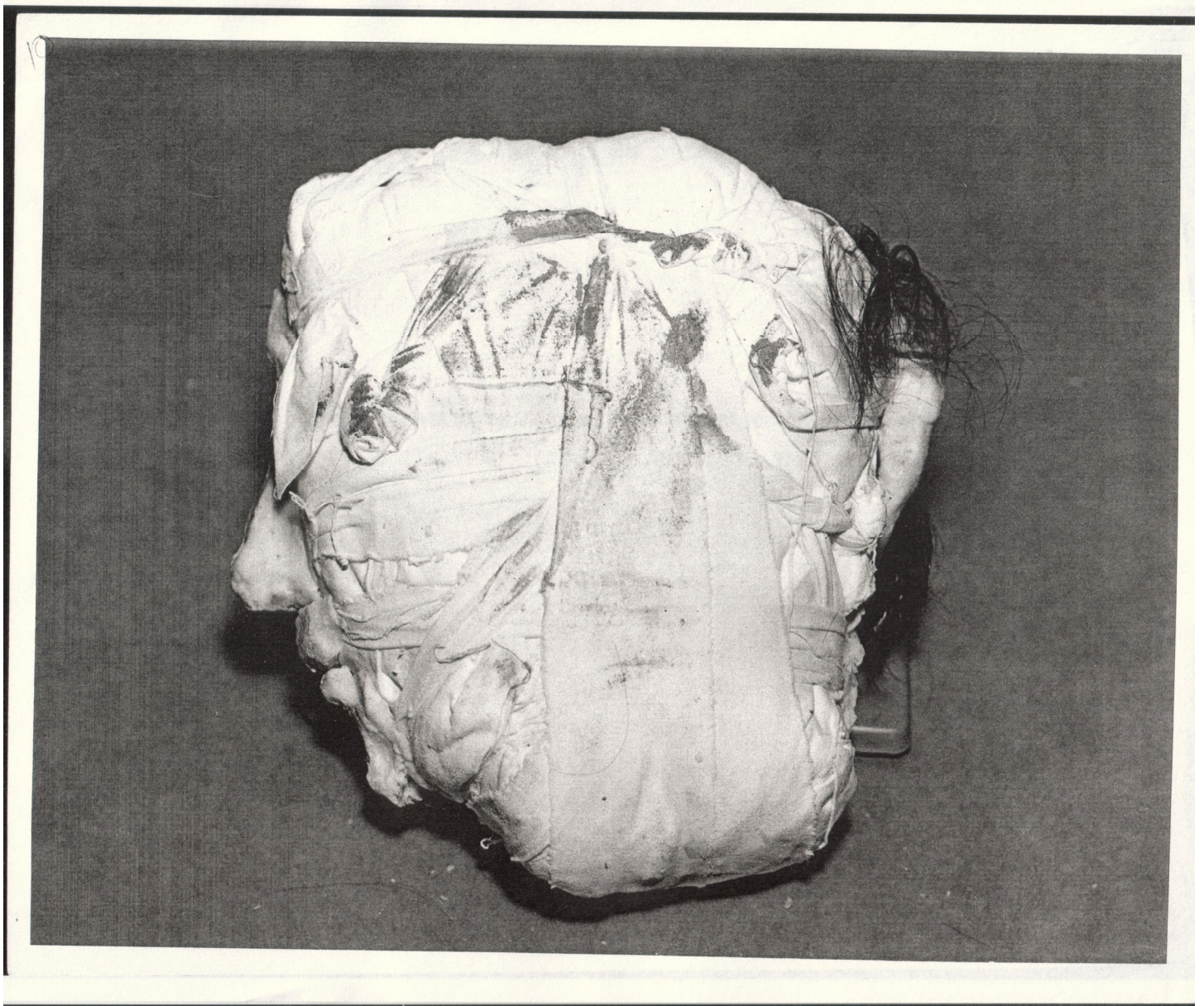
Replicas of ventilator grills placed in openings in cells through which Subjects exited to utility area between Cellblocks B and A. Replica on the left is the actual size of the metal grill originally in the wall. It was reproduced, as were all the rest, from artist's drawing board, which was faced with a linen-type substance. This material is available to all inmates for art painting purposes.



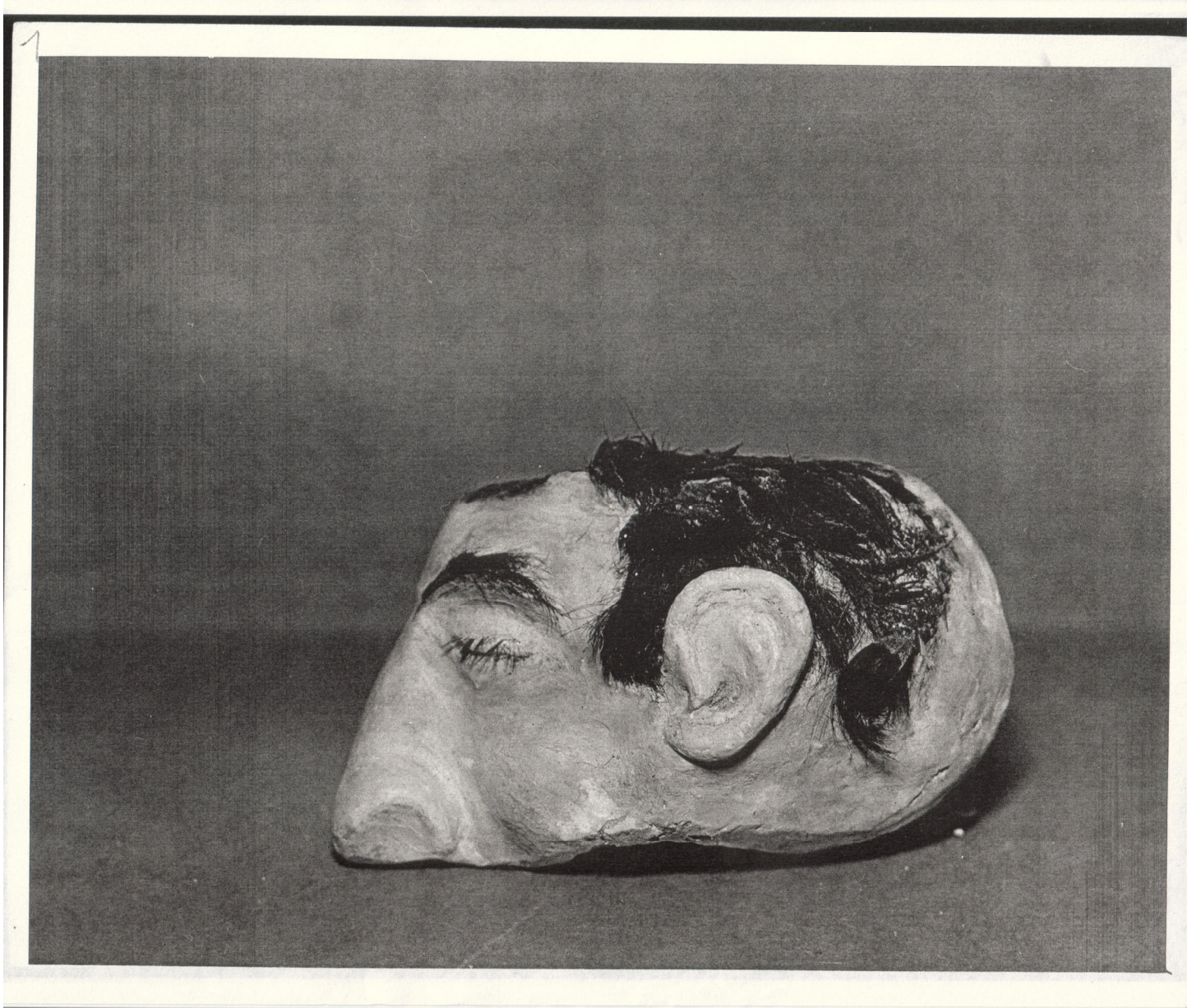
Cell of Clarence Anglin's toilet facility. There is the discarded "grate" in front of the toilet the night of the escape.



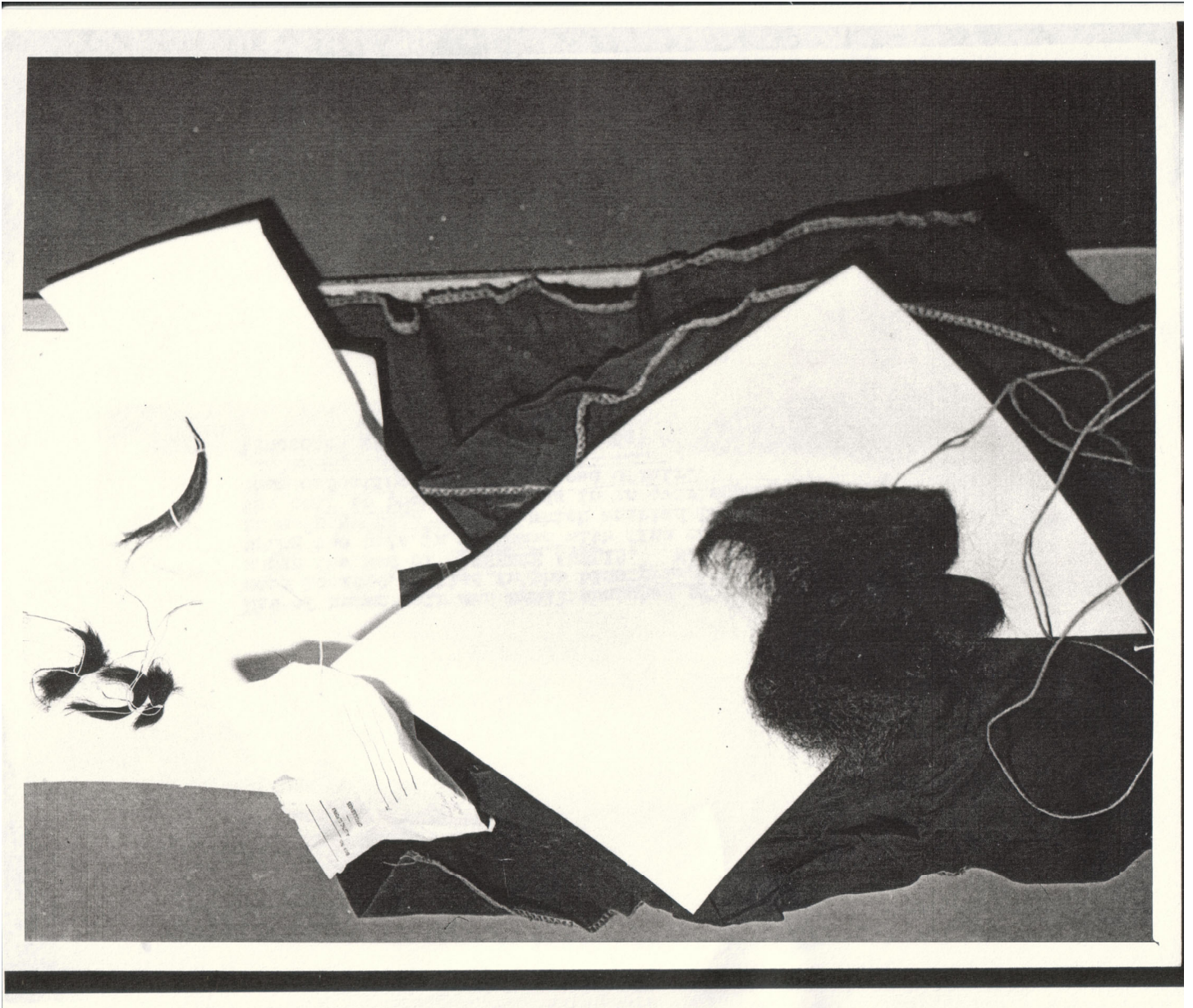
Dummy head of Frank Lee Morris. Head made of cement and real hair used in eyelashes, eyebrows and head covering. Nose was broke when head was rolled off bed from guard reaching in and pushing it.



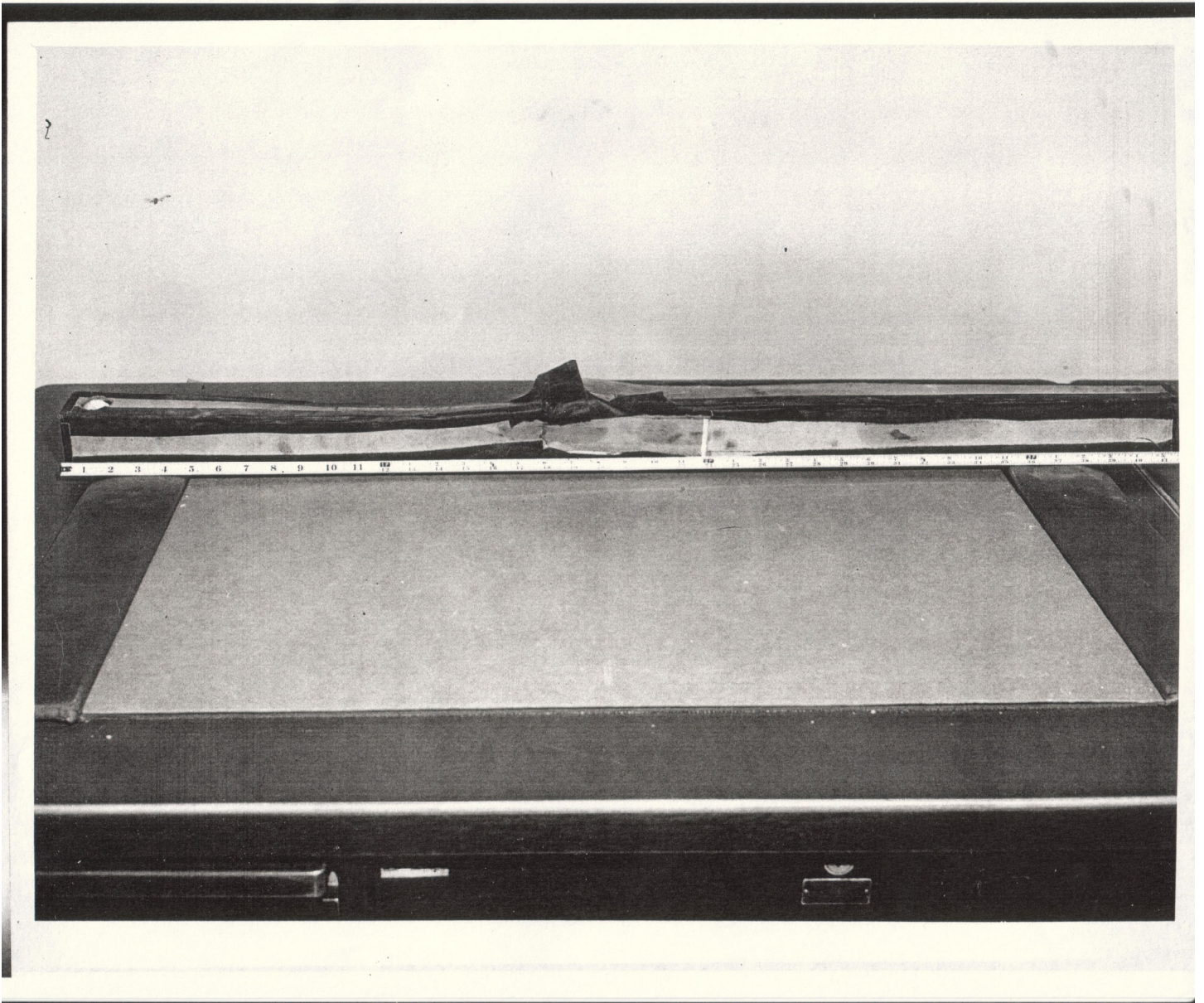
**Reverse of dummy head found in  
cell of Clarence Anglin.**



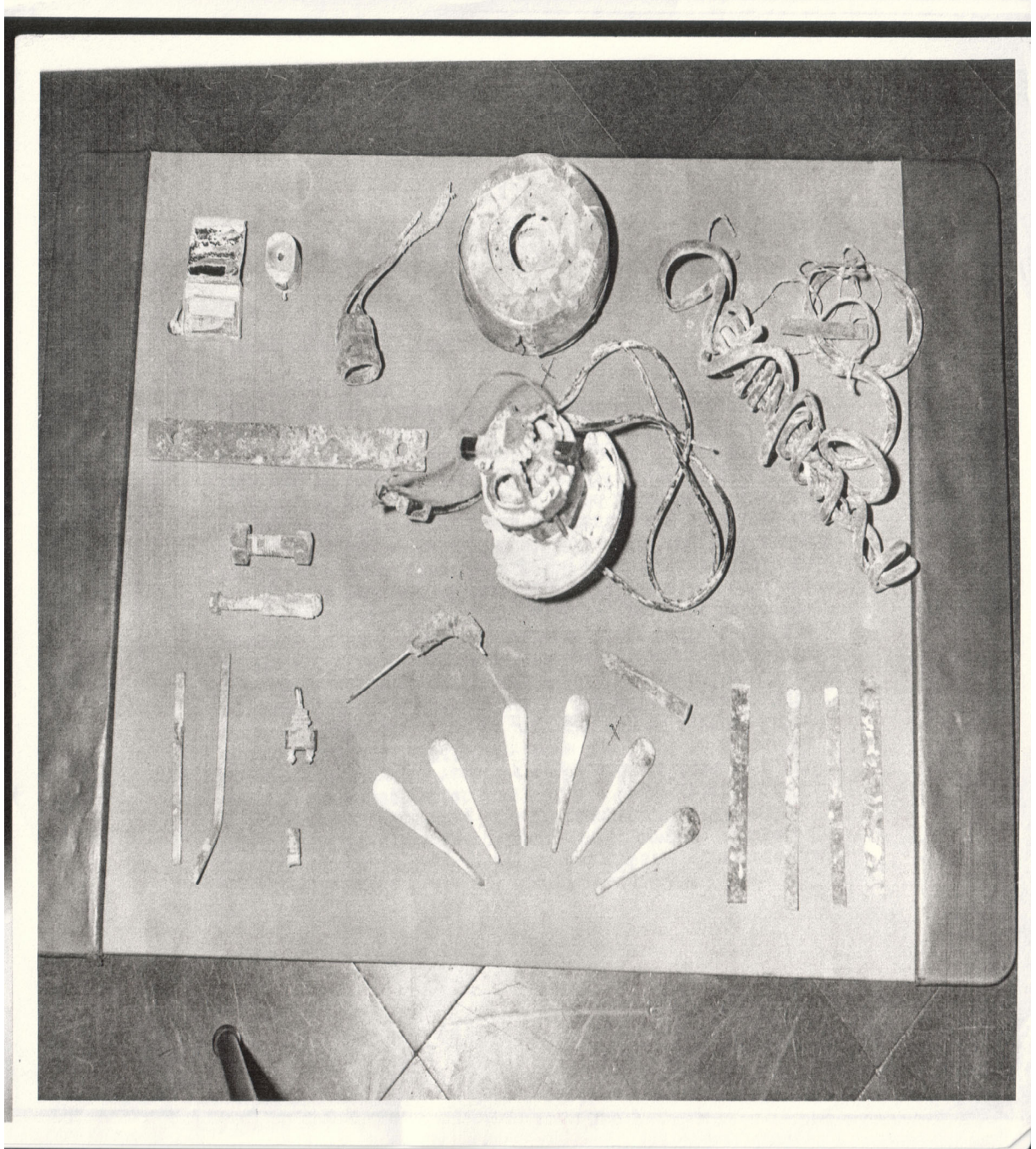
**Close-up profile of dummy head referred to by Allen West as “oink”. This was the first head made and it was funny looking and small that it was called “oink”.**



The mat and swatches are human hair that was found under Clarence Anglin's bed.



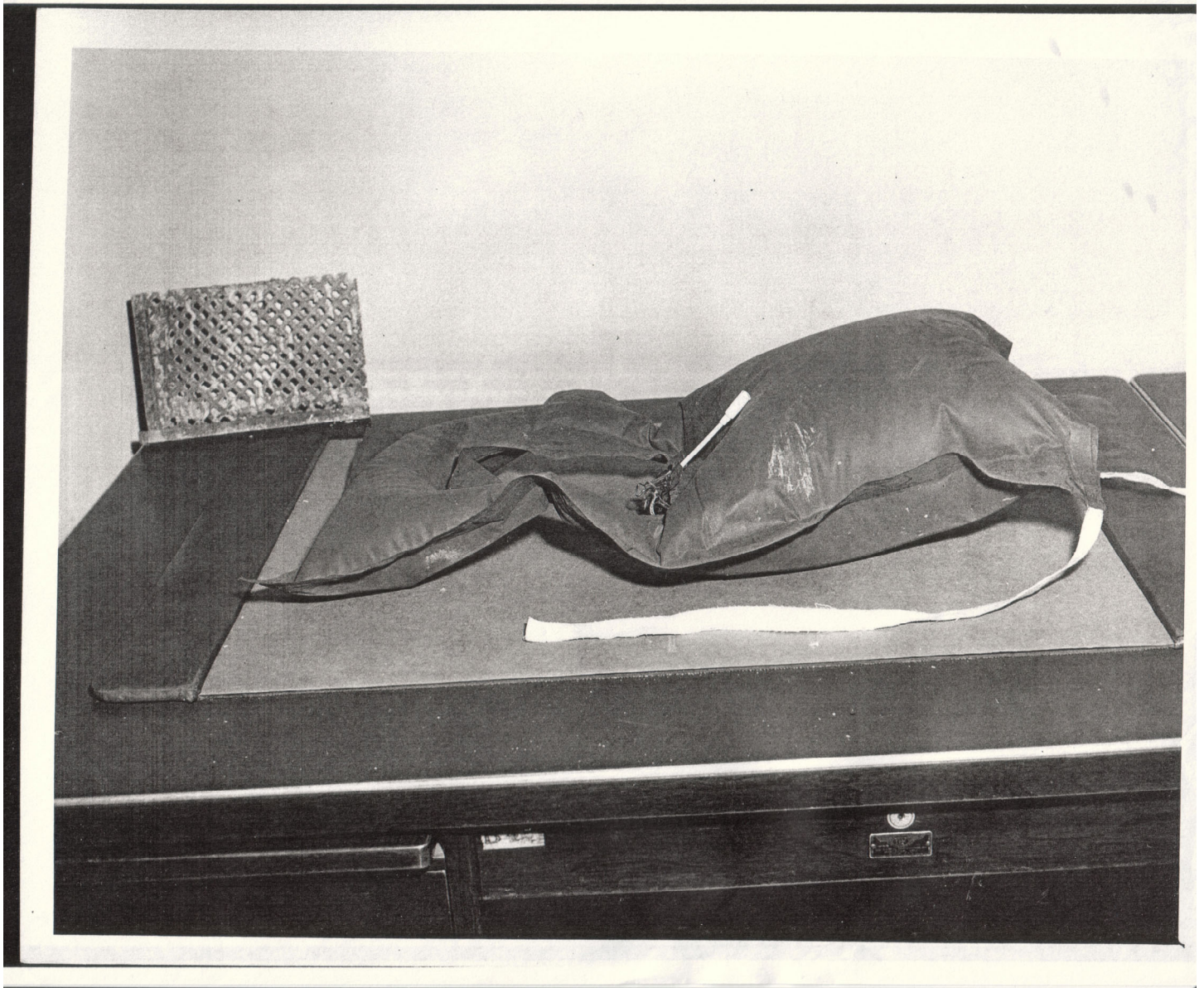
**Periscope photographed flat on a table with hole at the left.**



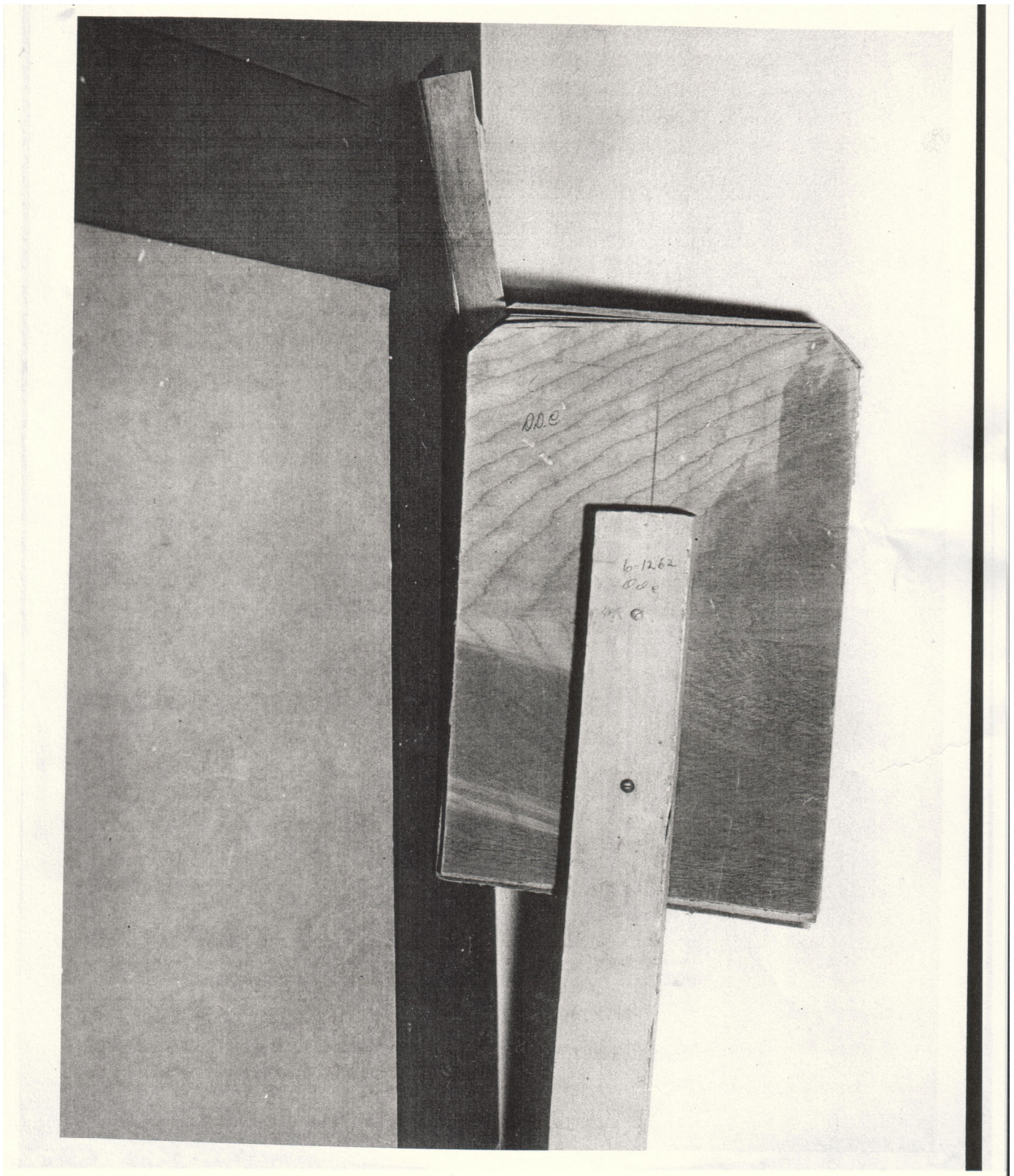
Tool and equipment made from readily available objects by the Subjects. Spoon handles were sharpened to use in penetrating cell walls. Motor was removed from vacuum cleaner and used as a drill. Shafts and sleeves may be used as means of applying pressure in spreading bars.



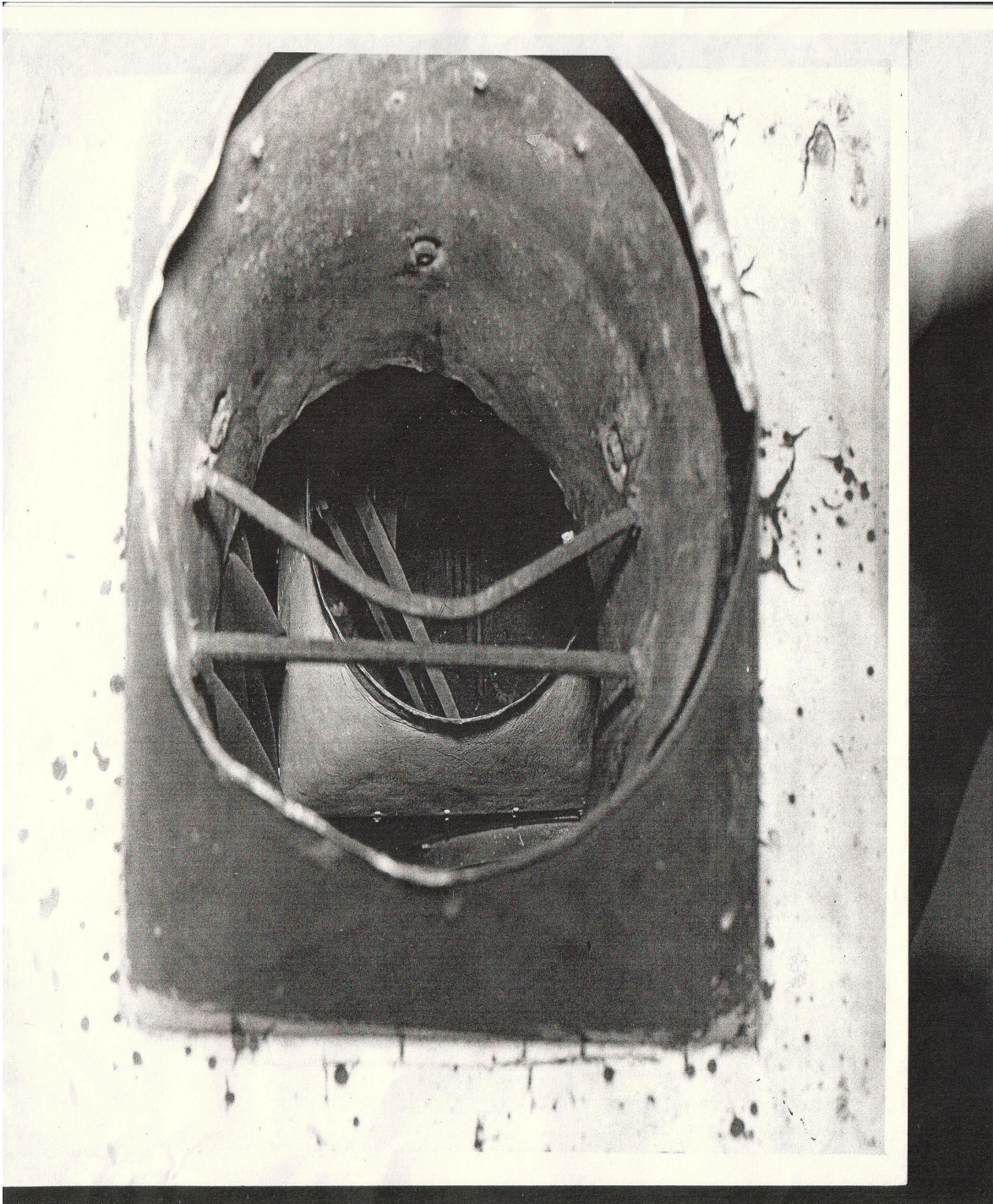
“Workroom” suspects used. Material at lower right believed to have been used in making the raft. On chair are some brass bolts, nuts and washers found in the paddle.



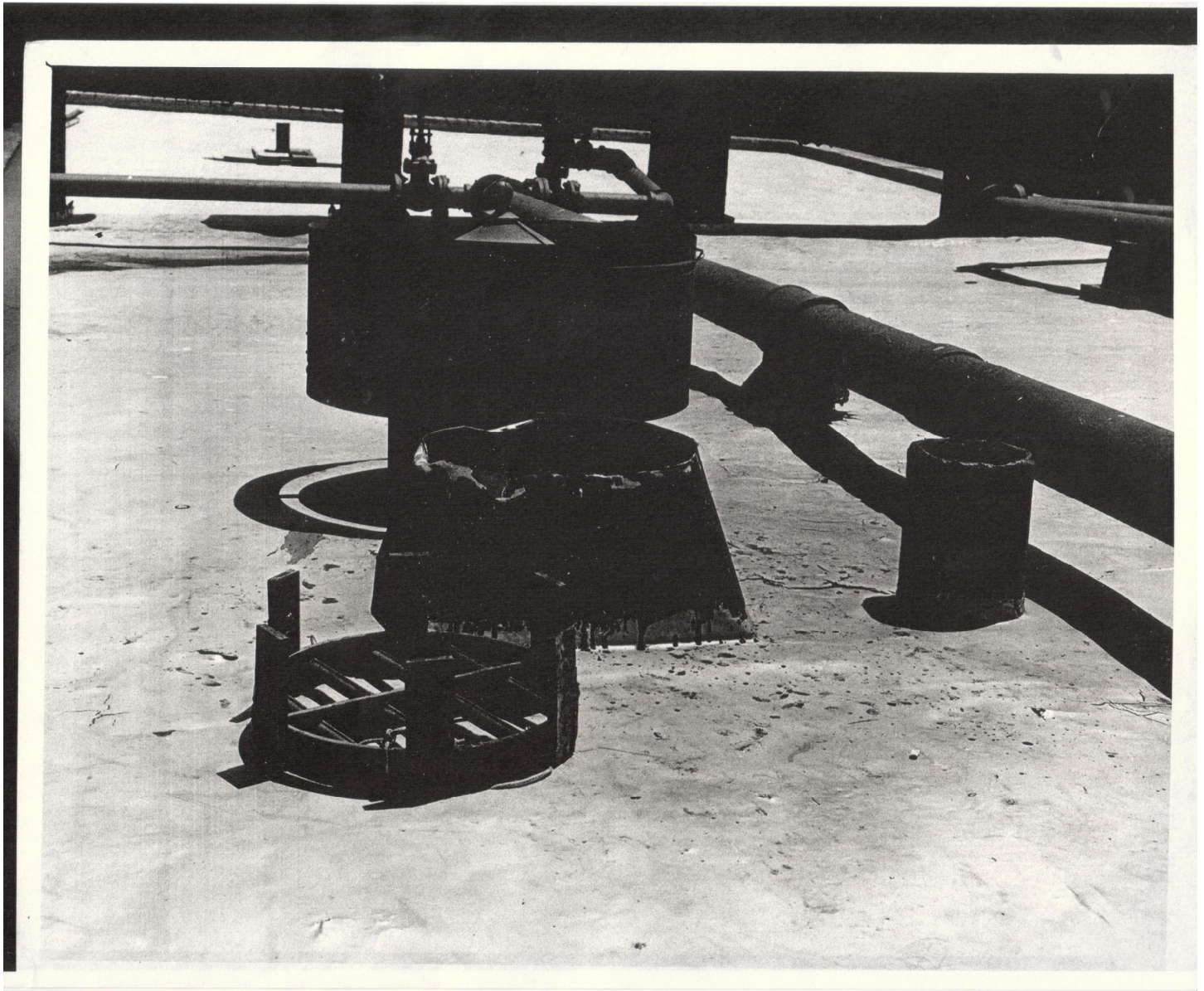
This is “yoke type” or “Mae West” life preserver made to assist escape. Material used was made from raincoat material. Note inflating type, which is a plastic tube, obtained from the usual type squirt bottle. Air was maintained by folding over the flap held in place by clamps, which are securely tied to prevent loss in the water.



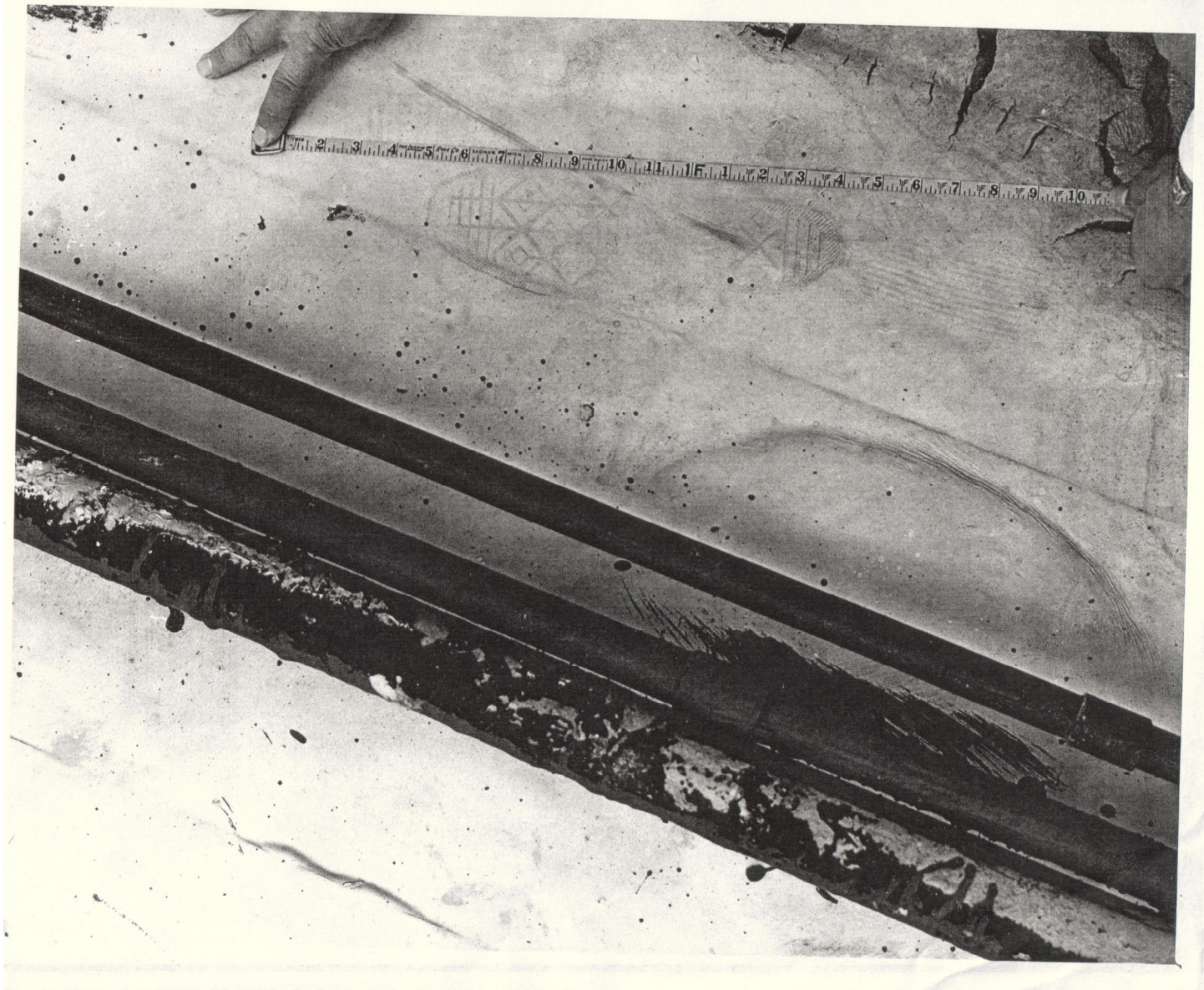
Rear view of paddle found on the shore of Angel Island.



Ventilator opening on the roof . The bent rod is on the eastern side of the hole. They bent these to squeeze through.



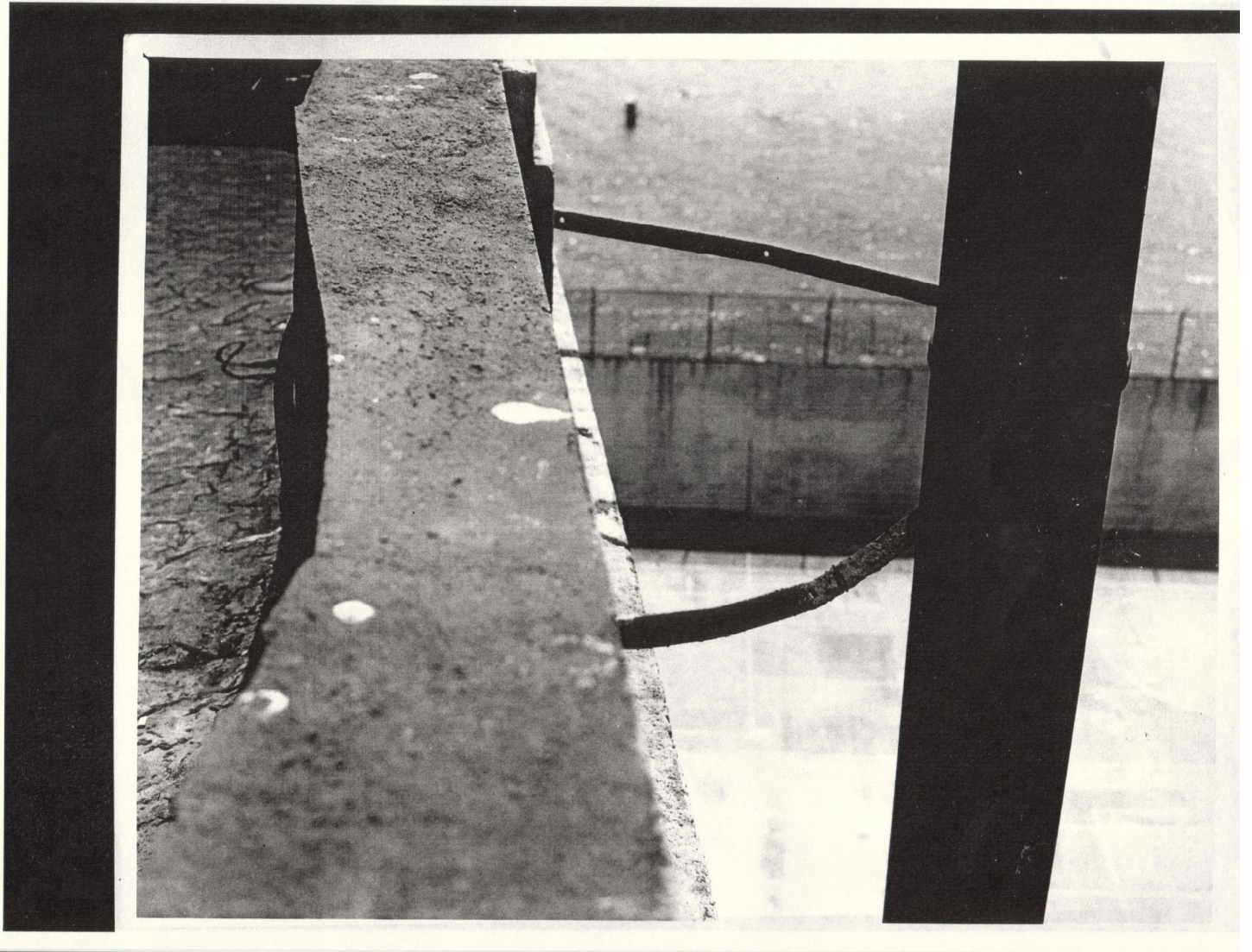
Photograph of ventilator on roof over Cellblock B. Photo taken looking south and shows in immediate foreground heavy iron grate which normally fits inside of funnel-shaped galvanized metal cone appearing immediately above grate. The object to the rear behind the opening is the ventilator top, which was removed to permit the Subjects to escape.



This is a photograph of an imprint of what appears to be the left foot. This print is headed in a north-westerly direction. The imprint appears to be that of the sole of a tennis shoe and is one of a number of fragmentary such prints visible on the roof indicating the direction of travel.



Photograph taken showing general roof area looking in a southerly direction from the bake over stack toward the Coast Guard lighthouse. The change in the roof elevation from Cell Block A, B and C, etc., may be observed with catwalks running on both sides of the picture. A paddle was found under the catwalk in approximate location indicated by the individuals seen in the photograph left center.



Pipe escapees shimmed down from roof of Alcatraz.



This shows the outside lighting. The dogs led us down to the water on the right hand side of picture. It is the area believed to have been used by the Subjects in reaching the water.



Rear view of the type of raincoat used by the Subjects in fashioning life preservers and rafts.



**Another view of the discarded raft.**

A NEW SERIES

~~Bob~~ ~~Bob~~ ~~Bob~~ 6/13/62  
Call # 138

# Sports

MAY 21, 1962 25 CENTS

# Illustrated



JAN 3 1962  
B HOUSE  
ALCATRAZ CAL

FUN ON THE WATER

1  
2  
3  
4  
5  
6  
7  
8  
9  
9  
10  
11

**B HOUSE  
1462  
ALCATRAZ CAL**

## SHOPWALK

New inflatable toys and equipment will provide fun on the water this summer

Until some Nosy Parker of a scientist comes up with proof to the contrary, air is still lighter than water—and a whole industry continues to thrive on this bit of elementary physics. It all started with the inner tube, and the end is not yet in sight. Inflatable objects range from water toys that resemble a zoolful of colorful animals to station wagon mattresses to small boats for hunters and fishermen. Because they can be deflated when not in use, they take up very little storage space, whether in an automobile or a closet. They are lightweight, and if properly cared for will wear better and last longer than foam-composition equipment or toys.

Most good inflatables now stress safety features such as dual air chambers that are completely independent of each other and which inflate and seal separately. If a stopper should pop off accidentally or a puncture occur in one air chamber, the other air chamber will support the float until safety is reached or repairs can be made. Many seams are double laminated. Valves on some of the better equipment are designed so that they allow air to enter freely but keep it from escaping. Caps are generally added to each valve as an extra precaution.

The composition of most inflatables, whether boats, mattresses or toys, is either vinyl plastic or rubberized fabric. Inexpensive vinyl inflatables are sometimes made of reused vinyl which does not hold up well under wear. A good virgin vinyl generally runs from 12 to 14 gauge (weight and thickness). Manufacturers, however, are not required to mark the gauge of vinyl. The best way to tell the difference between vinyls is to feel and compare the thickness and weight; an inexpensive, reused vinyl is generally much thinner and lighter.

Rubberized fabric is durable and more difficult to puncture than vinyl. It is made of heavy-duty cotton duck or nylon that has been impregnated with liquid rubber. This seals the fabric, making it watertight. Mattresses and tubes made of rubberized fabric do not stick together from the inside when deflated as old rubber inner tubes do when they are stored away for the winter. The fabric is treated and powdered on the inside to prevent sticking.

Parents and nonswimmers should keep in mind that many inflatables, as well as other floating devices, are *not* life preservers, unless they are specifically labeled as such. Most floating objects are primarily for fun and comfort.

A wide assortment of pumps and inflators to take the work out of blowing up inflatable equipment is available this season. There are hand pumps, foot pumps, built-in pumps, replaceable CO<sub>2</sub> cartridges and even

*continued*

WI



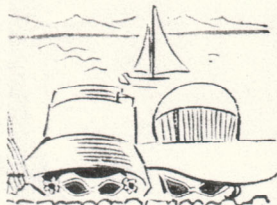
### Life is precious. Protect it.

Take special pains to assure that the life jacket you choose will save her life when it must. A GenTex life jacket will. It is designed to turn the wearer "Face-Up" in the water even when stunned or unconscious. GenTex life jackets and skee belts are constructed of GenTex foam for safety, and molded for comfort. Boating or water skiing, safety begins before the fun...when you put on a GenTex Coast Guard Approved life jacket or a GenTex Skee Belt. Write for free literature: GenTex Corporation, 450 7th Avenue, New York 1, New York



at better marine and sporting good shops everywhere

RE ON  
na



na

15

**SHOPWALK** *continued*

sleeping cot, chair or chaise longue. Made of red plaid rubberized fabric, it is 75 inches long by 24 inches wide. Each of the three sections inflates separately. The metal alloy frame is jointed and can be set and locked at four different angles. The legs fold for flat packing.

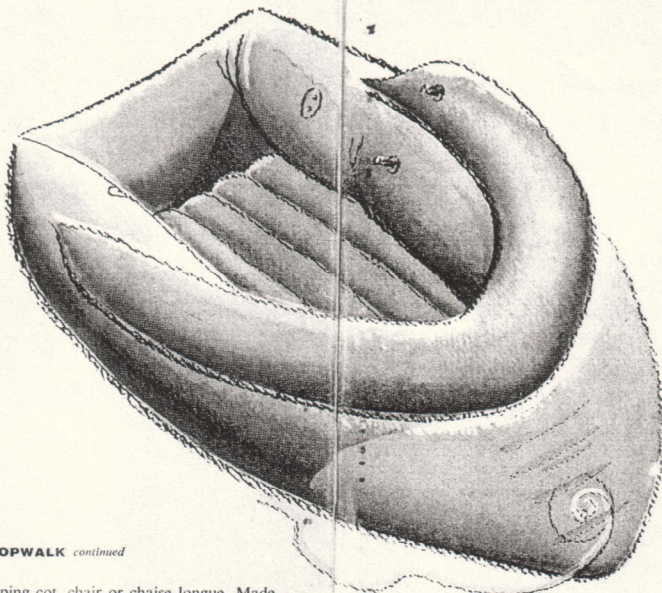
L. L. Bean (Freeport, Me.) makes an excellent air mattress (\$21.85) for camp, station wagon or beach. It is constructed of heavy rubberized cotton, with a special tufted construction that gives it uniform thickness throughout. Equipped with a brass rotating lock-type valve, it is 75 by 25 inches and can be used in a sleeping bag.

A double-width (72 by 47 inches) station-wagon mattress of laminated vinyl (\$6), which can also be used in the water, is made by Holiday, New York City. It features two pillows that inflate individually and two valves for the body of the mattress. Holiday also has a surfriider mattress (\$4), with a clear-plastic viewing window built in. Made of heavy-duty vinyl for surfing, it is 72 inches long by 30 inches wide and has three separate air valves for inflating.

A good safety raft for pools and lakes is Healthways' 51-by-54-inch canvas-and-latex rubber raft (\$30). It has six air chambers (one on each of the four sides and two in the middle of the raft). Ropes pass through grommets on all four sides of the raft for added safety.

The most imaginative swimming toys for children this season are inflatable creatures, such as turtles, crabs, inchworms and walrus. The brightly colored turtle (\$5 at F.A.O. Schwarz) is made of heavy-gauge vinyl and is 21 inches long. Its flat back provides a comfortable water ride for children while its head conceals a squeaker. It floats on three air chambers, and the flippers

W4



*From Toys 'R Us*

**VOIT UTILITY BOAT IS EASY TO STORE**

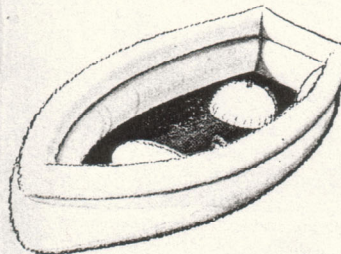
can be filled with water for added stability.

Alvimar puts out the realistic-looking crab (\$2). Made of vinyl, it is 22 inches in diameter and has a split tail that helps to hold a youngster securely. Alvimar also makes a colorful six-panel beach ball (\$1) with a painted face and googly eyes that move. It is 20 inches in diameter.

The suave-looking inchworm (\$2) is 50 inches long and has three buoyant air chambers. Children can float on it or ride it like a horse. The fat, shiny, 30-inch walrus (\$2.50) comes complete with inflatable tusks and rolling eyes. Both worm and walrus are made by Ideal Toys, New York City. Ideal puts out a paddle tennis game (\$1) consisting of two inflated 17-inch rackets that make a walloping sound when they connect with a tennis-size inflated ball; the game also comes with a standard-size

*continued*

**VOIT BOAT FOR KIDS HAS VIEWING PORT**



W5



So  
for  
**Hennes**

What a handsome golden luxury of Hennessy

This beautiful set of glasses, shipped to you from Cognac, France, is yours for the price of a coupon is for your coupon

**Hennessy Supreme** by the world's largest Cognac brandies.

★ ★  
**HENNESSY**

COGNAC B  
84 Proof • Schieffelin

of escaping through the ventilation area in the roof. They discussed about the possibility of breaking out of Alcatraz and swimming to the mainland. ██████ said that swimming to the mainland was impossible. They considered cutting a couple of the front cell bars and possibly going up the left front part of the cell area to behind a steel cage door and working on this as a means of exit, then they decided that this could not be accomplished. ██████ said that he had told them that he had cut out of cement before at other institutions and it could be done so long as they had plenty of time. ██████ said that they could go out through the roof through the ventilator hole as he felt that he could get the lid off. It was then apparent that they had to get out of the back part of their cell into the utility corridor to get to the roof. The only possible escape area at the back of the cell was through a 6 inch by 9 inch iron ventilator. It was decided that this hole could be enlarged by taking out the cement to approximately a 10 inch by 13 inch hole. ██████ volunteered that he had previously checked through library books while at various institutions and had ascertained that cement would start disintegrating at from 500 to 900 degrees. ██████ obtained some element wires similar to those in a toaster. He does not recall the source of these wires, however, he recalls that this occurred in October about 1961. ██████ plugged this wire into the electric outlet in his cell, but he could not get enough heat through it to deteriorate the cement. He had discussed this, as well as the escape with John Anglin and Clarence Anglin, brother of John and who resides in cell #152 in "B" Block. b7c b7D

John Anglin said that he had a spoon which he had sharpened and which somewhat resembled a screw driver. John Anglin started poking around the side of the ventilator in his cell and he made a little bit of headway into the cement. This was about December of 1961, and by this time ██████ had discussed the plan with Frank Morris #1441-AZ who was in cell #138 in "B" Block and who was to work with them. Clarence Anglin obtained a spoon and made a few dents in the cement next to his ventilator. The four of them got several spoons, the source of these spoons being not recalled, and by doubling them similar to a screw driver, started to make holes in the cement. It was decided to start the first hole a short distance from the top left hand corner of the ventilator grille. They started to work shortly after the 5:15 or 5:30 P. M. count in the evening and would work until 9:30 P. M.

The cells of the two Anglin brothers were adjacent to each other. The cells of ██████ and Morris were adjacent to each other. One evening, one of the Anglin Brothers would watch while the other worked and the next evening they would change positions. ██████ and Morris used the same method. Finally, after about three days work, ██████ dug a hole about 3 inches deep, then for a period

John and Clarence Anglin then made a small dummy face out of cement and gave it a flesh color. They put hair and eyebrows on it with glue and they named it "Oink."

After Clarence broke through his hole in the wall, they made a dummy back for the hole which can be removed. This was made out of cardboard and painted. One evening Clarence Anglin went up the utility corridor to near the roof, using the network of plumbing in the corridor as a ladder. He crawled on top of the cell blocks. He used a screw driver and tried to take the screws out of the 18½ inch diameter metal coupling which was between the roof ventilator and the roof. He couldn't accomplish this by himself and needed help. About this time [redacted] in connection with his work detail, had to paint one day in the utility corridor and about the cell block area in the vicinity of this roof ventilator. While painting in that area that day, [redacted] took the screws out of the ventilator coupling. He had taken clasps from his bed and bolted them together and used them as a clamp, thus succeeding in loosening the screws of the coupling. The coupling, although unscrewed, was still in place so no one would notice anything amiss.

About this time, Clarence Anglin made a second dummy head of cement which was stored on top of the cell block next to the roof. This one was called "Qacar" and was to be given to Frank Morris. Then Clarence Anglin and Frank Morris went up the utility corridor next to the roof on about three evenings and they took the coupling out of the roof hole and from the ventilator. They put grease around it so it would slide out easily and replaced it so that no one would notice anything amiss.

While working around the cell block area painting, [redacted] noticed that bolts in certain instances were screwed in a lapin and were not bradded. He thus believed that this type of bolt could be loosened and therefore, since this was a type on a lid covering the ventilator hole to the roof, they would be able to remove that lid. When [redacted] was painting near the Barber Shop he grabbed some electric barber clips, placed them in a plastic bag and dropped them into his paint bucket. He removed them later the same day and secreted them in his cell. About that time, one of them was able to obtain about a dozen drill bits, the source of which was unknown to [redacted]. [redacted] then set up the motor of the barber clippers so that it would be used with the aid of the drill bits as a drill. Morris and one of the Anglin brothers tried to use this as a drill in removing the bolts of the lid covering the ventilator to the roof. They said the motor was too small and wouldn't do the job. About that time the vacuum cleaner in the cell area broke down and [redacted] had a chance to examine it to see if it could be repaired. [redacted] noted that it had two motors in it. He took one of the motors out and then he wired the other motor up so that it would run the vacuum cleaner.



AMERICA'S  
WORLD'S  
SEATTLE

THIS SIDE OF CARD IS FOR ADDRESS

Warden  
Alcatraz Prison  
Alcatraz Island  
San Francisco Bay, Calif

76-26295 Q1 IN

HAAA WE MADE IT

FRANK  
John  
Curran

76-26295 Q1 IN


**SPECIAL INVESTIGATIVE DIVISION**

**July 2, 1962**

**Background:**

U. S. Engineers office, San Francisco, has advised that the tides at time of Alcatraz escape on June 11, 1962 would have caused a free flowing body to flow out to the Pacific under Golden Gate Bridge. Because of force of tides, reaching of Angel Island would have been difficult. Water temperature was 50 to 54 degrees.

All bodies located in the Bay area being closely checked for possible identification with the escapees. Intensive investigation continuing for any possible trace of the escapees.

*674*  *I think Sec. 88.7 should take this investigation with out any such indication.*

## **Norwegian Vessel SS Norefjell**

**After this vessel left for an extended freighter run advised the coast guard on August 8 that they had left on a trip July 17 that some 20 miles NW of the Golden Gate Bridge, they spotted a body floating next to this vessel when they were proceeding to Canada and New Zealand. They didn't stop to report same because they didn't have a U.S. radio channel capability. They made note in the ship logbook and was not mentioned until they returned on August 18. Using binoculars, they observed a body floating face downward, with hands and feet dangling down into the water. He could see the rump of the body clearly and the body was fully clothed in dirty white full-length trousers. This was witnessed by another sailor on watch. When they returned, he happened to mention this to a San Francisco Bar Pilot.**

**Portions of trousers similar to that worn by the escapees were shown to them. They stated they were aware the blue-white type prison garment bleaches in salt water and sun and could become almost white. The body they saw floating appeared to have been prison trousers.**

**Coroner for San Francisco City and County advised that it was probable that the body could have been one of the escapees. We checked the suicides around that time and none of the suicides wore these types of trousers.**

## **Suicides**

- During 2 years prior to the escape police and coast guard advised 35 definite suicides were listed as jumping from the Golden Gate Bridge.
- 5 bodies hit the rocks or ground underneath the extreme ends of the bridge and bodies were recovered.
- Of the other 30, 17 bodies were recovered and 13 bodies have not been recovered
- Records also listed 12 probable suicides, without recovery
- Total of 42 and only 17 bodies recovered
- Investigation is only made if there was 3 or 4 witness to the jumping.
- 1 witness classifies a probable suicide
- When a jump has been witnessed a marker is thrown near the spot where the individual entered the water.
- When the escapees entered the water, it would have been at the beginning of an outgoing tide, which offers the distinct possibility that they could have been taken out to sea in a short period of time, and could have well been facilitated by the additional buoyancy of the preservers.

End of Alcatraz presentation